

Laurier Drive



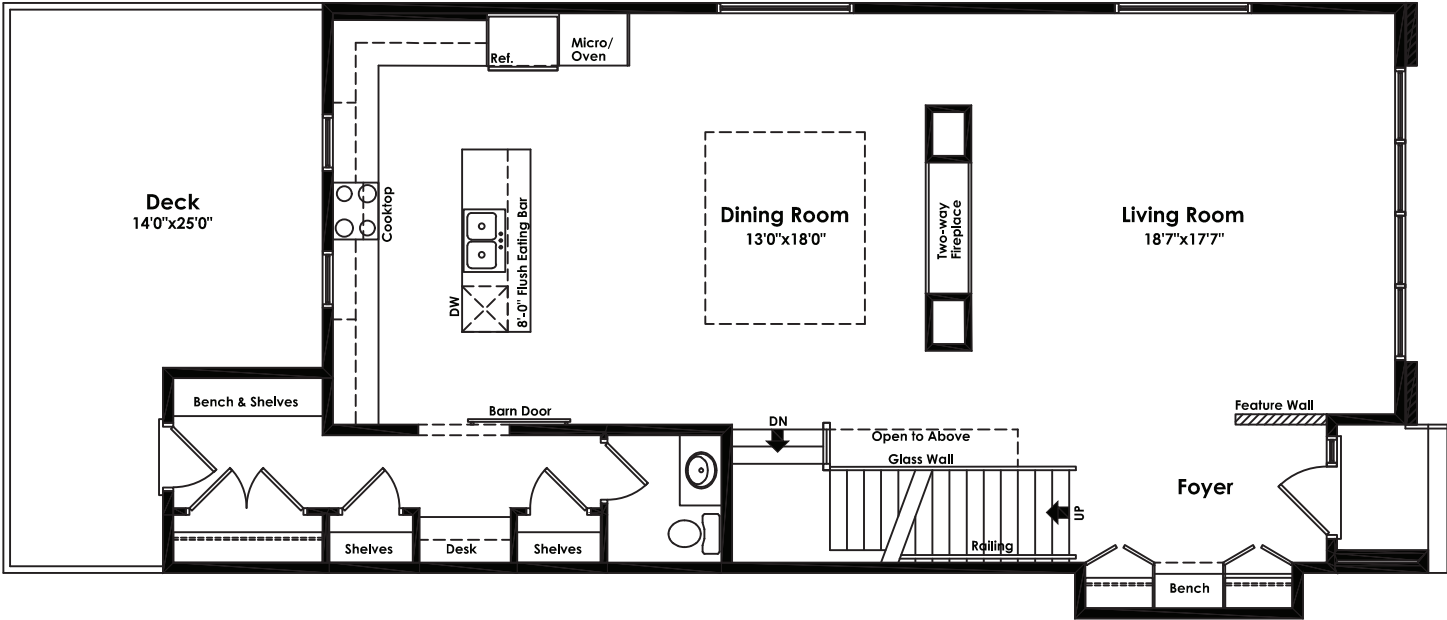
pkdevelopments.com

Pacific



Highlights

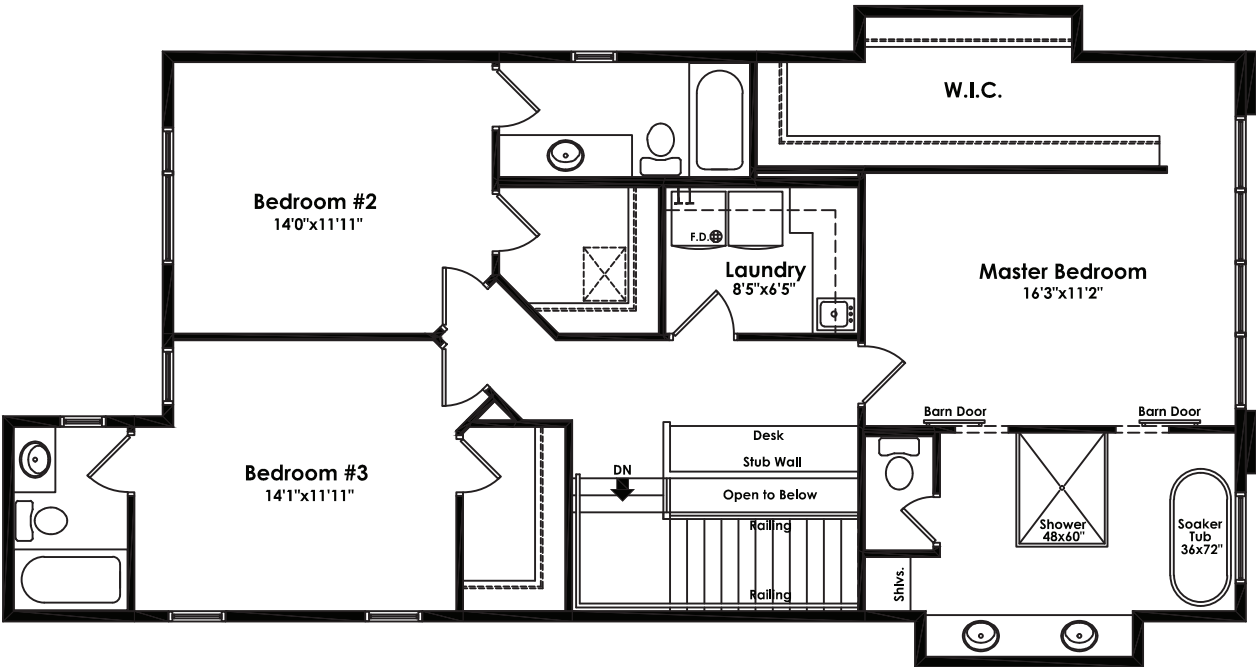
- 10 Foot Ceilings
- Engineered Hardwood & Tile
- Quartz in Kitchen & Bathrooms
- 2nd Floor Laundry
- Ensuites for all bedrooms
- Fully developed basement
- Spa inspired master ensuite



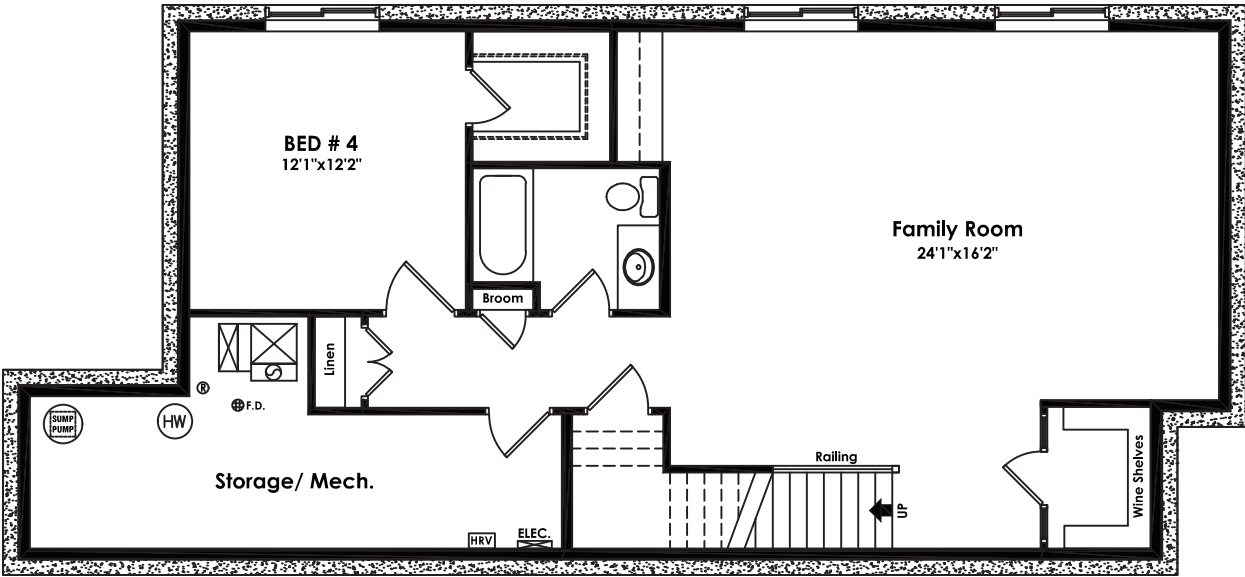
Main Floor Plan  
1251 sf (10'-1" Ceiling)

2468 Square Feet | 3 Bedroom | 3.5 Bath

In an effort to improve our product, floor plans and specifications are subject to change without notice. Actual floor plan, elevation and square footage may not be exactly as shown and floor plans may not be available in all areas.



**Second Floor Plan**  
1217 sf (9'-1" Ceiling)



**Basement Development**  
942 sf (10'-0" Concrete Walls)

**Elite Workmanship - Livable Homes**

In an effort to improve our product, floor plans and specifications are subject to change without notice. Actual floor plan, elevation and square footage may not be exactly as shown and floor plans may not be available in all areas.