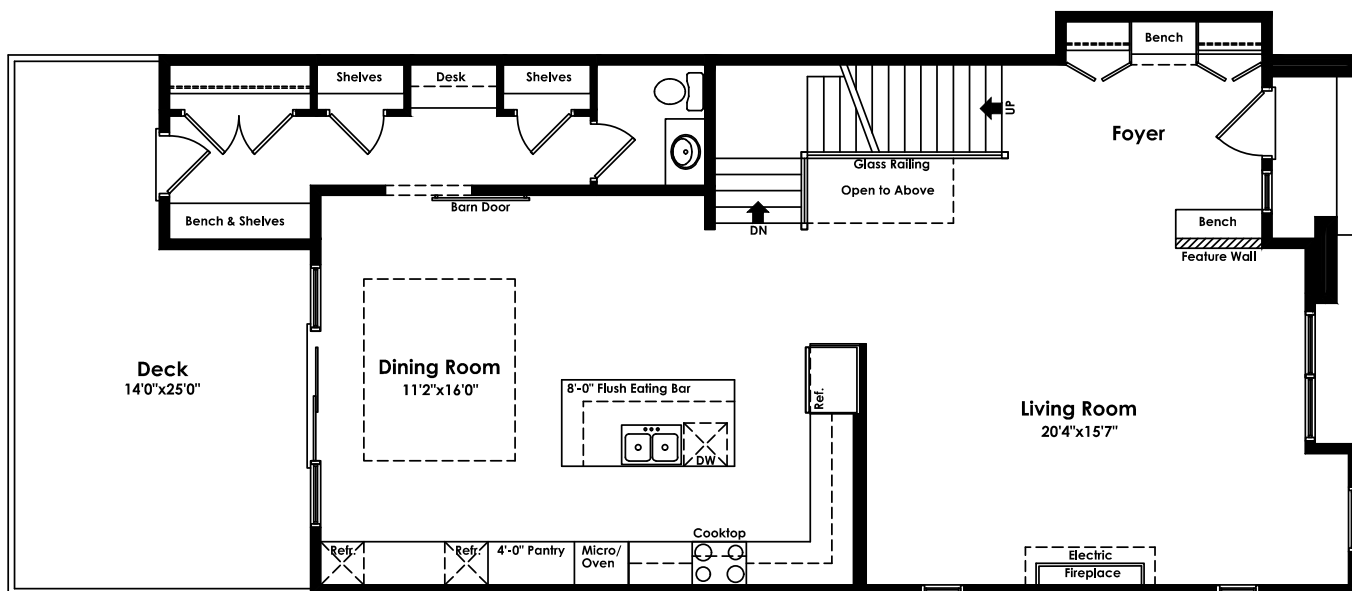


Parker



Highlights

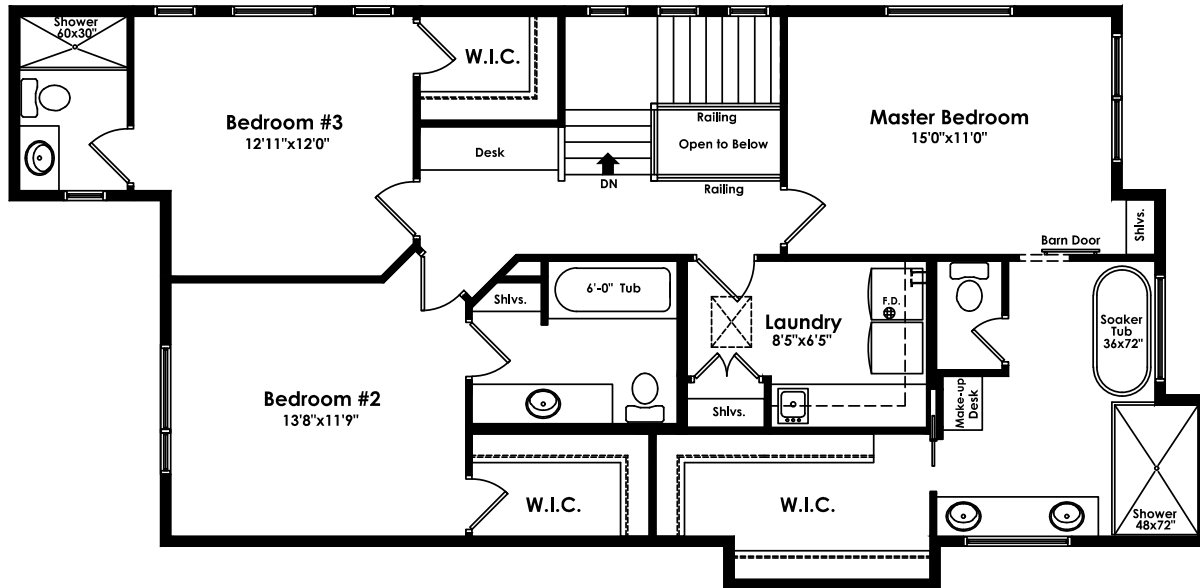
- 10 Foot Ceilings Main / Basement
- Spa inspired master ensuite
- Engineered Hardwood & Tile
- Quartz in Kitchen & Bathrooms
- Impressive 2nd Floor Laundry
- Ensuites for 2nd & 3rd bedrooms
- 942 sq ft developed basement



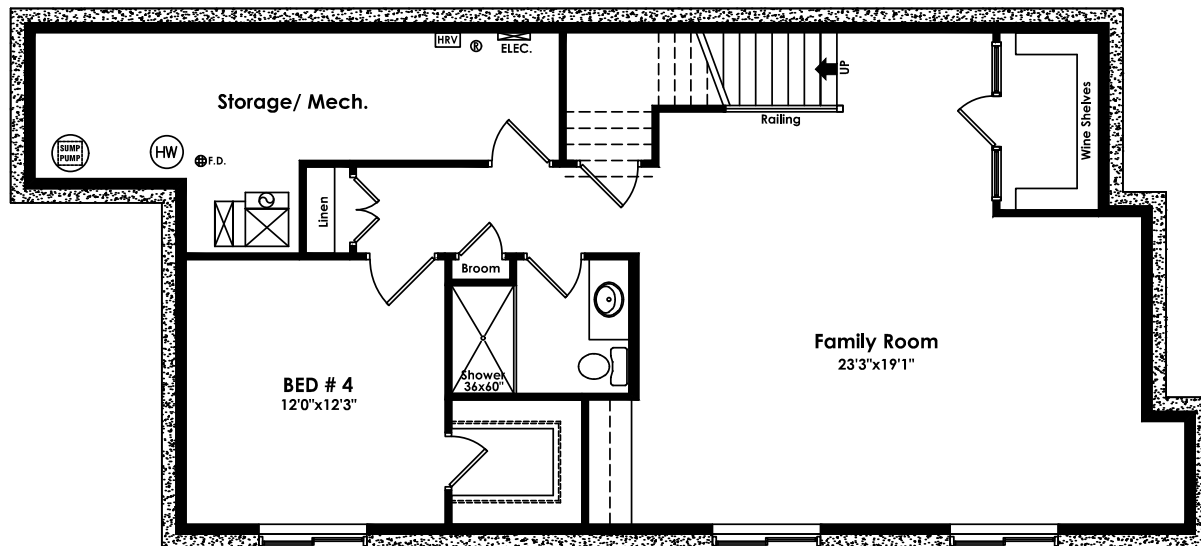
Main Floor Plan
1243 sf (10'-1" Ceiling)

2405 Square Feet | 3 Bedroom | 3.5 Bath

In an effort to improve our product, floor plans and specifications are subject to change without notice. Actual floor plan, elevation and square footage may not be exactly as shown and floor plans may not be available in all areas.



Second Floor Plan
1162 sf (9'-1" Ceiling)



Basement Development
926 sf (10'-0" Concrete Walls)

Elite Workmanship - Livable Homes

In an effort to improve our product, floor plans and specifications are subject to change without notice. Actual floor plan, elevation and square footage may not be exactly as shown and floor plans may not be available in all areas.